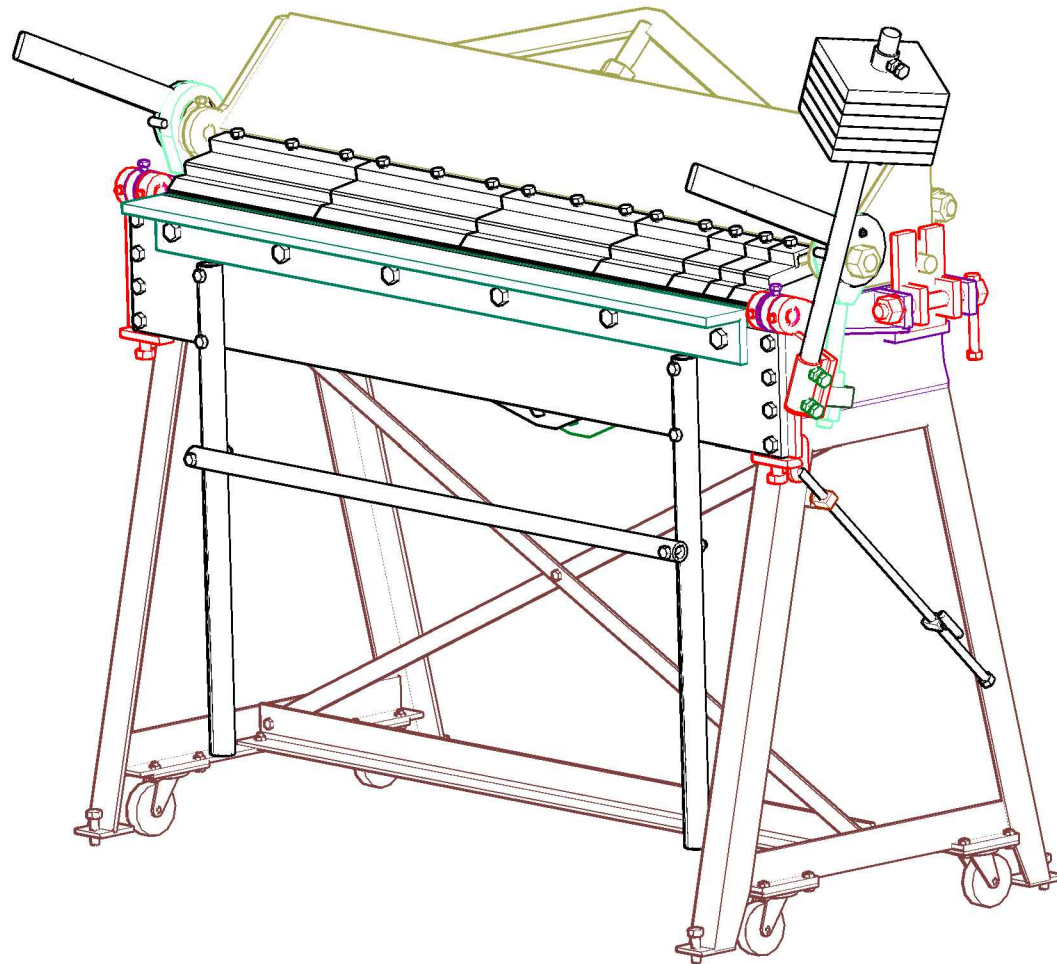
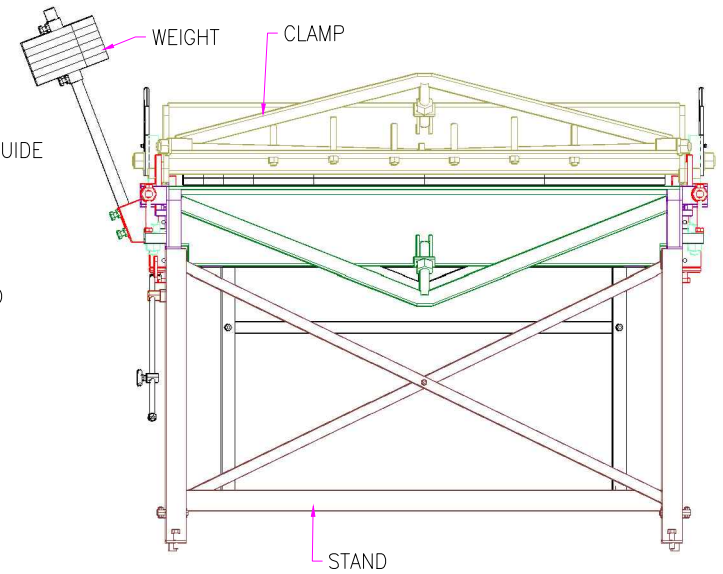
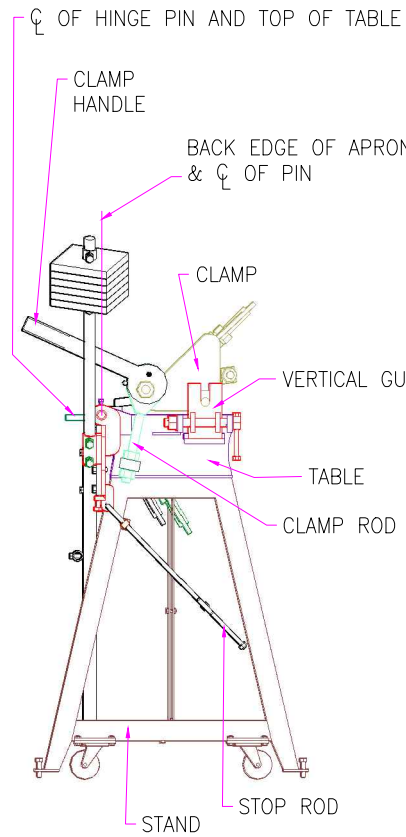
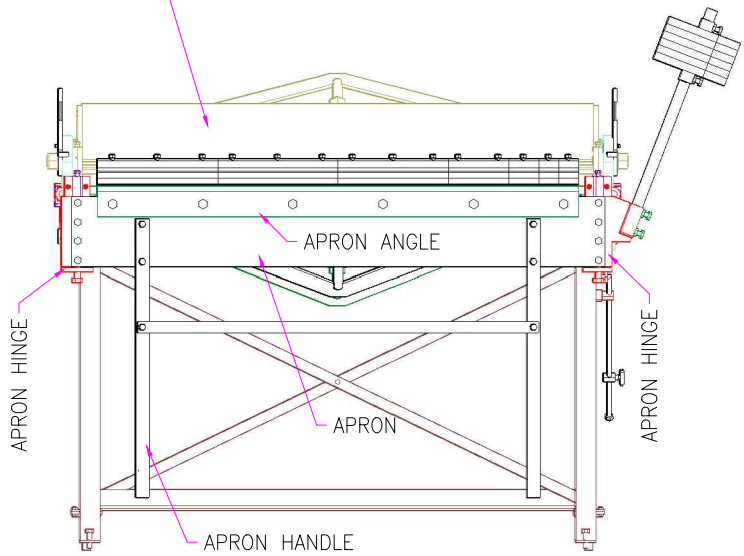
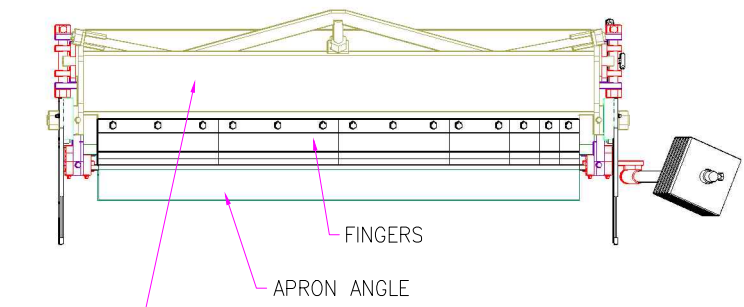
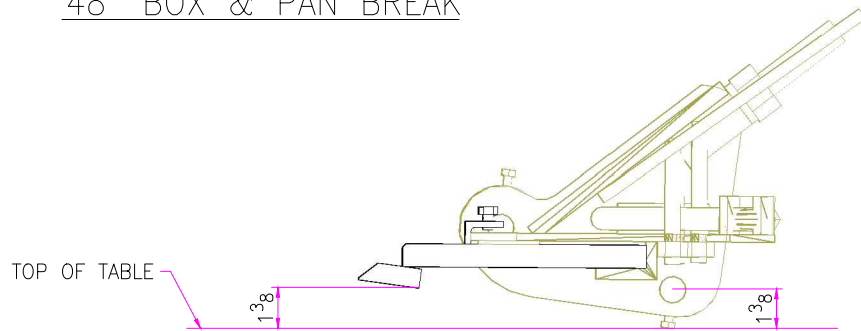


# 48" BOX & PAN BREAK

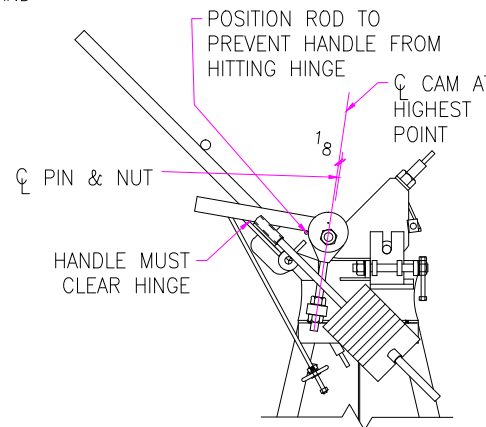




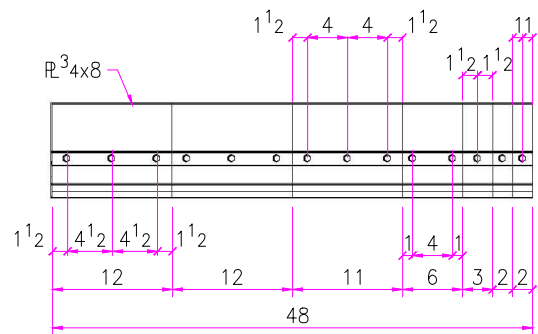
48" BOX & PAN BREAK



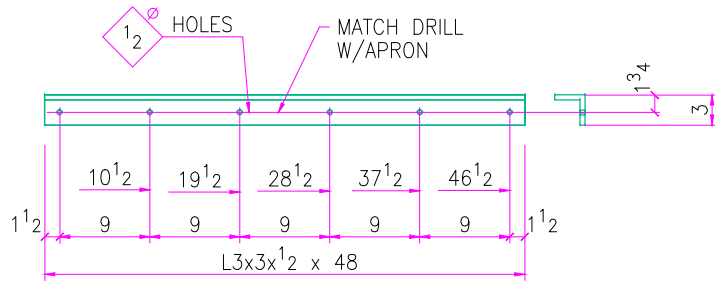
CLEARANCE AT OPEN POSITION



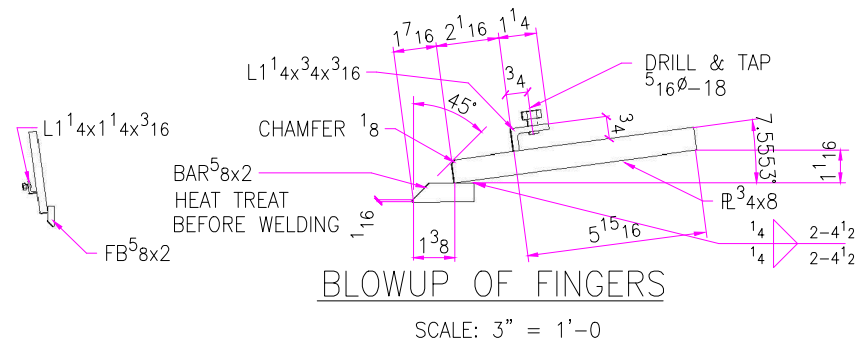
AutoSD, Inc. Meridian, Mississippi			
DETAIL OF	48" BOX & PAN BRAKE		
PAINT	1 COAT GREEN		
MATERIAL:	A36	ALL WELDS 1/8" U.N.O.	
HOLES 21 FOR UNLESS NOTED	DRAWN CRH	CHECKED	SHEET # ONE



FINGERS

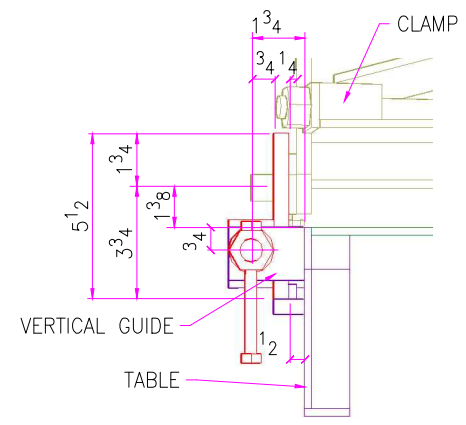


APRON ANGLE



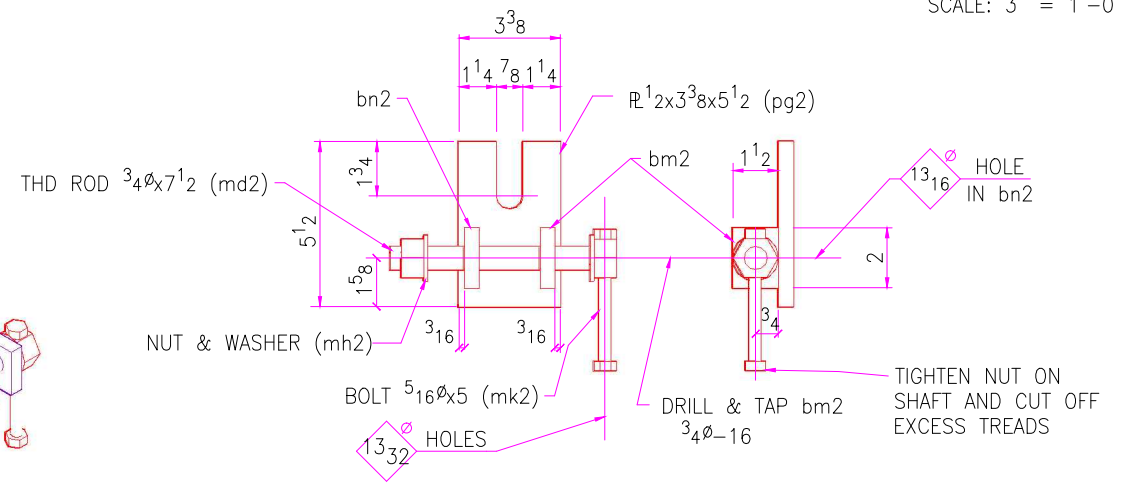
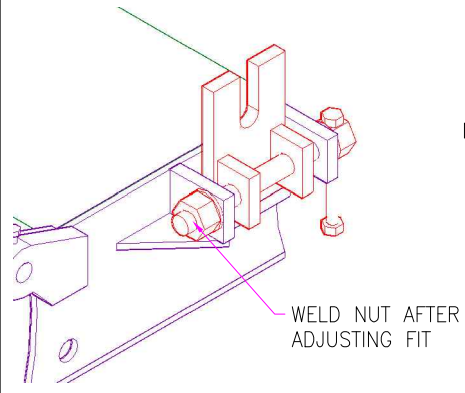
BLOWUP OF FINGERS

SCALE: 3" = 1'-0



ASSEMBLY DETAIL

SCALE: 3" = 1'-0



VERTICAL GUIDE

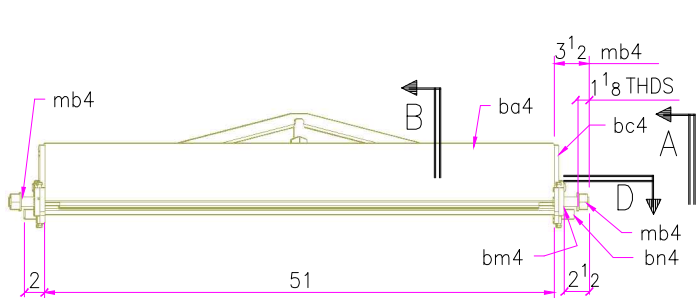
ONE<sup>R</sup> ONE<sup>L</sup>

SCALE: 3" = 1'-0

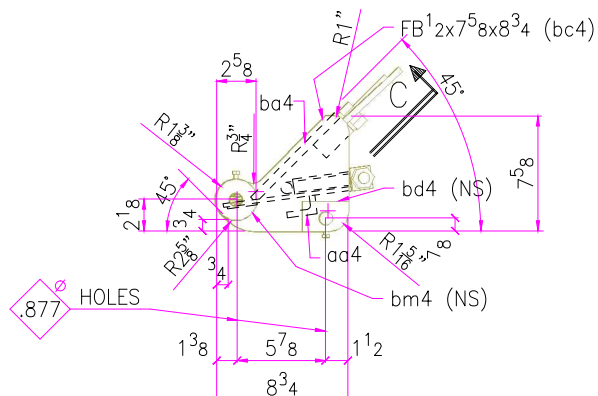
QUANTITY	DESCRIPTION	INCHES	ASSEMBLY MARK
ONE	FINGERS		
2	FB 3/4 x 8	12	pa2
ONE	FB 3/4 x 8	11	pb2
ONE	FB 3/4 x 8	6	pc2
ONE	FB 3/4 x 8	3	pd2
2	FB 3/4 x 8	2	pf2
2	BAR 5/8 x 2	12	ba2
ONE	BAR 5/8 x 2	11	bb2
ONE	BAR 5/8 x 2	6	bc2
ONE	BAR 5/8 x 2	3	bd2
2	BAR 5/8 x 2	2	bf2
2	L 1 1/4 x 1 1/4 x 3/16	12	aa2
ONE	L 1 1/4 x 1 1/4 x 3/16	11	ab2
ONE	L 1 1/4 x 1 1/4 x 3/16	6	ac2
ONE	L 1 1/4 x 1 1/4 x 3/16	3	ad2
2	L 1 1/4 x 1 1/4 x 3/16	2	af2
14	BOLT 5/16	0 1/2	mb2
ONE	APRON ANGLE		
ONE	L3 x 3 x 1/2	48	ag2
6	BOLT 1/2	1	ma2
2	VERTICAL GUIDE		
2	R 1/2 x 3/8	5 1/2	pg2
2	BAR 1/2 x 1 1/2	2	bm2
2	THD ROD 3/4 - 16	7 1/2	md2
4	3/4 NUT & WASHER		mh2
2	BOLT 5/16 W/NUT	5	mk2
2	BAR 1/2 x 1 1/2	2	bn2

AutoSD, Inc. Meridian, Mississippi			
DETAIL OF	48" BOX & PAN BRAKE		
PAINT	1 COAT GREEN		
MATERIAL: A36		ALL WELDS 1/8" U.N.O.	
HOLES 21 64 FOR 5/16 BOLTS UNLESS NOTED	DRAWN CRH	CHECKED	SHEET # 2



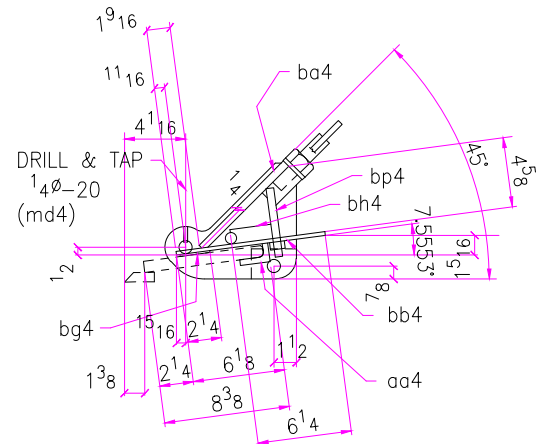


CLAMP ONE



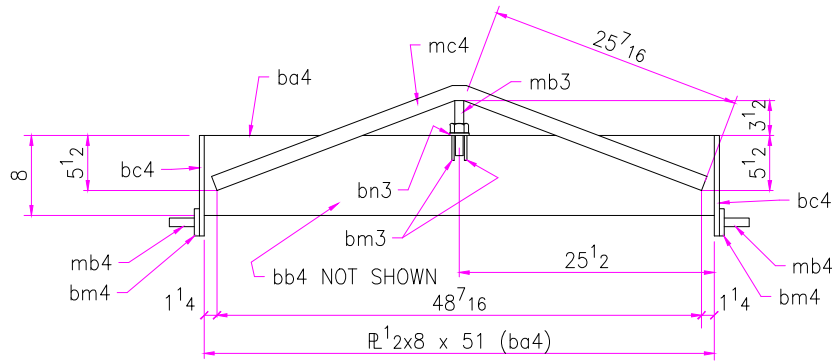
SECTION A

SCALE: 1 1/2" = 1'-0"

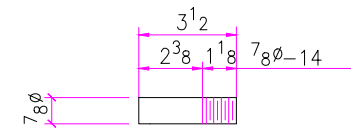


SECTION B

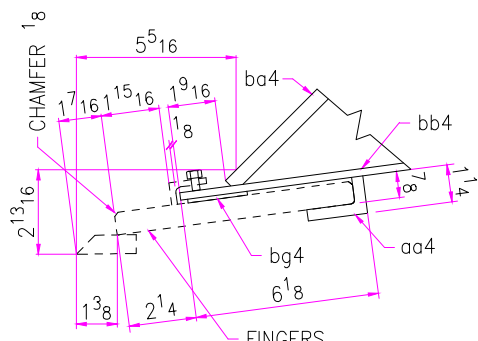
SCALE: 1 1/2" = 1'-0"



SECTION C

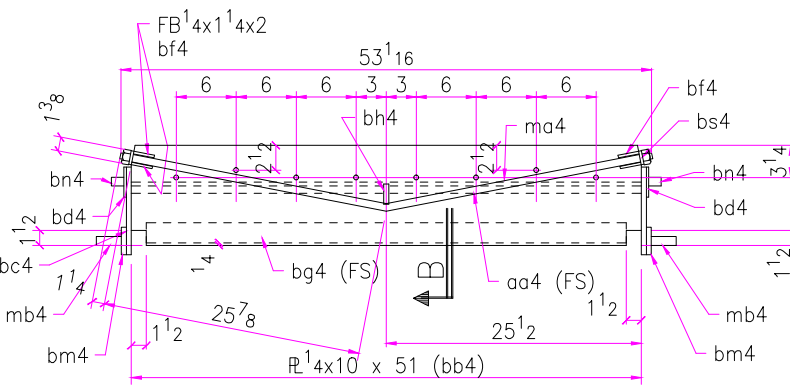


DETAIL OF mb4



DETAIL A

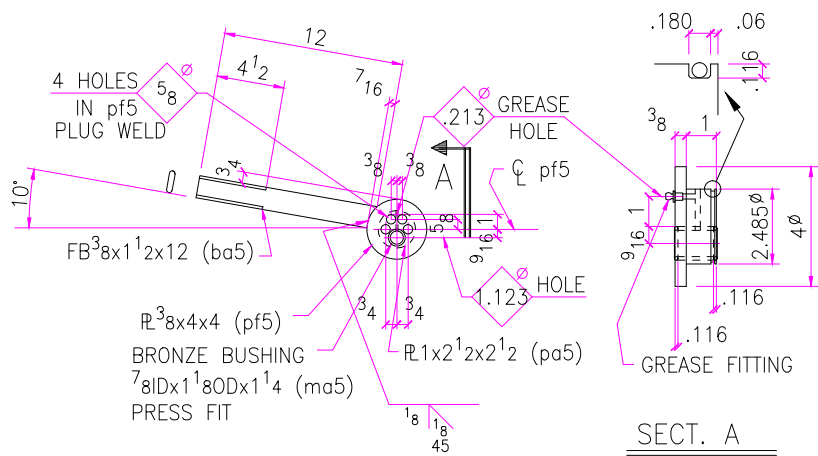
SCALE: 3" = 1'-0"



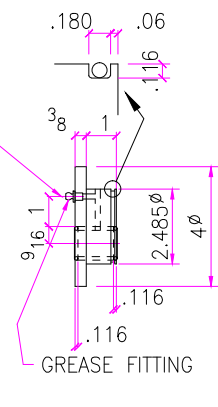
SECTION D

QUANTITY	DESCRIPTION	INCHES	ASSEMBLY MARK
ONE	CLAMP		
ONE	FB 1/2 x 8	51	ba4
ONE	FB 1/4 x 10	51	bb4
2	FB 1/2 x 7 5/8	8 3/4	bc4
2	FB 1/4 x 2	3	bd4
4	FB 1/4 x 1 1/4	2	bf4
ONE	FB 1/8 x 2	48	bg4
ONE	FB 1/2 x 1	3	bh4
2	R 1/2 x 2 3/4 Ø	2 3/4	bm4
2	ROD 7/8 Ø	2	bn4
8	BOLT 1/2 Ø W/NUT	5	bp4
2	FB 1/4 x 1 1/2	1 1/2	bs4
ONE	L 2 x 2 x 3/8	51	aa4
ONE	ROD 3/4 Ø W/NUT	54 1/4	ma4
ONE	FB 3/8 x 1 1/2	52 3/8	mc4
2	FB 1/4 x 1 1/4	2 1/2	bm3
ONE	FB 1/4 x 1 1/2	1 1/2	bn3
ONE	ROD 7/8 Ø W/NUT	5 1/2	mb3
2	ROD 7/8 Ø W/NUT	3 1/2	mb4
2	SET SCREW 1/4 Ø-20	1	md4

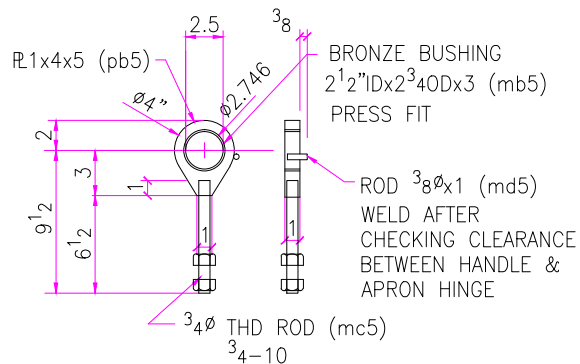
AutoSD, Inc. Meridian, Mississippi			
DETAIL OF	48" BOX & PAN BRAKE		
PAINT	1 COAT GREEN		
MATERIAL: A36	ALL WELDS 1/8" U.N.O.		
HOLES 21 64 Ø FOR 5 16 Ø BOLTS UNLESS NOTED	DRAWN CRH	CHECKED	SHEET # 4



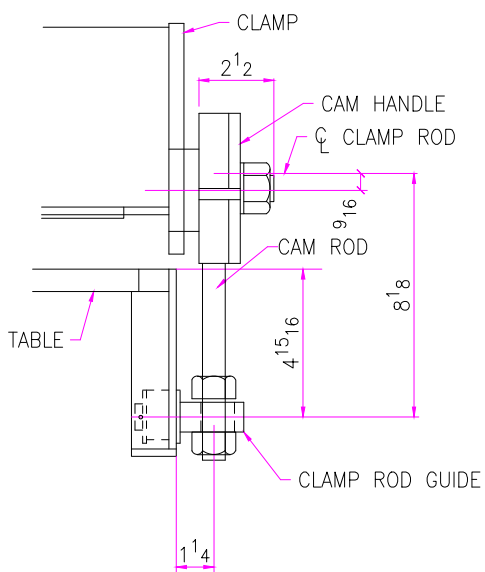
**CLAMP HANDLE**  
ONE<sup>R</sup>-ONE<sup>L</sup>  
SCALE: 1 1/2" = 1'-0"



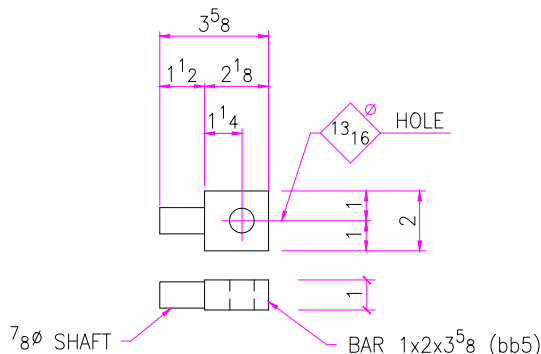
**SECT. A**  
SCALE: 3" = 1'-0"



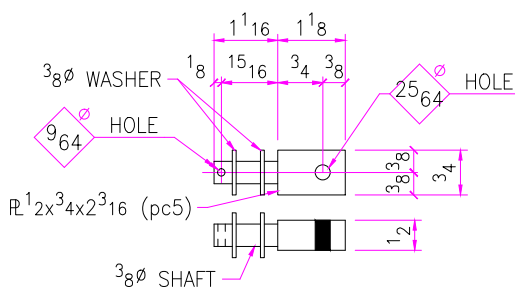
**CLAMP ROD**  
ONE<sup>R</sup>-ONE<sup>L</sup>  
SCALE: 1 1/2" = 1'-0"



**ASSEMBLY DETAIL**  
STANDARD CAM SCALE: 3" = 1'-0"



**CLAMP ROD GUIDE**  
2  
SCALE: 3" = 1'-0"



**STOP ROD GUIDE**  
ONE  
SCALE: 6" = 1'-0"

QUANTITY	DESCRIPTION	INCHES	ASSEMBLY MARK
2 <sup>R/L</sup>	CLAMP HANDLE		1 <sup>R</sup> -1 <sup>L</sup>
2	FB 3/8 x 1 1/2	12	ba5
2	R 1 x 2 1/2	2 1/2	pa5
2	R 3/8 x 4	4	pf5
4	O-RING 7/8 ID x 1 1/8 CS		POLYURETHANE
2	O-RING 2 3/4 ID x 1 1/8 CS		POLYURETHANE
2	BRONZE BUSHINGS		
	7/8 ID x 1 1/8 OD	1 3/8	ma5
2 <sup>R/L</sup>	CLAMP ROD		1 <sup>R</sup> -1 <sup>L</sup>
2	R 1 x 4	5	pb5
2	THD ROD 3/4	7 1/2	mc5
4	ROD 3/8	1	md5
4	NUT 3/4		
	BRONZE BUSHINGS		
ONE	2 1/2 ID x 2 3/4 OD	3	mb5
2	CLAMP ROD GUIDE		
2	BAR 1 x 2	3 5/8	bb5
ONE	STOP ROD GUIDE		
ONE	R 1 2 x 3 4	2 3 16	pc5
2	3/8 WASHER		
ONE	COTTER PIN 1/8	3 4	

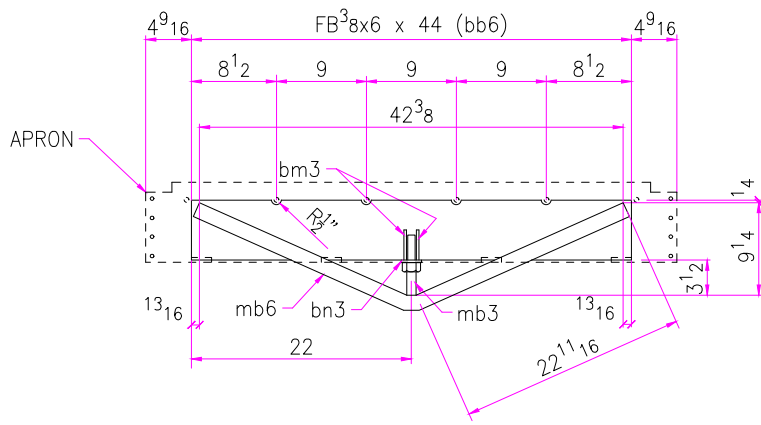
AutoSD, Inc.  
Meridian, Mississippi

DETAIL OF 48" BOX & PAN BRAKE

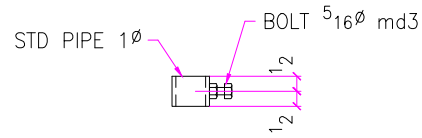
PAINT 1 COAT GREEN

MATERIAL: A36 ALL WELDS 1/8" U.N.O.

HOLES 2 1/16 FOR 5/16 BOLTS UNLESS NOTED	DRAWN CRH	CHECKED	SHEET #
			5



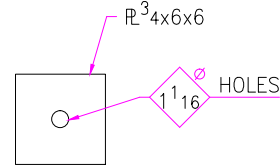
BACK PLATE (bb6)



WEIGHT CLAMP

2

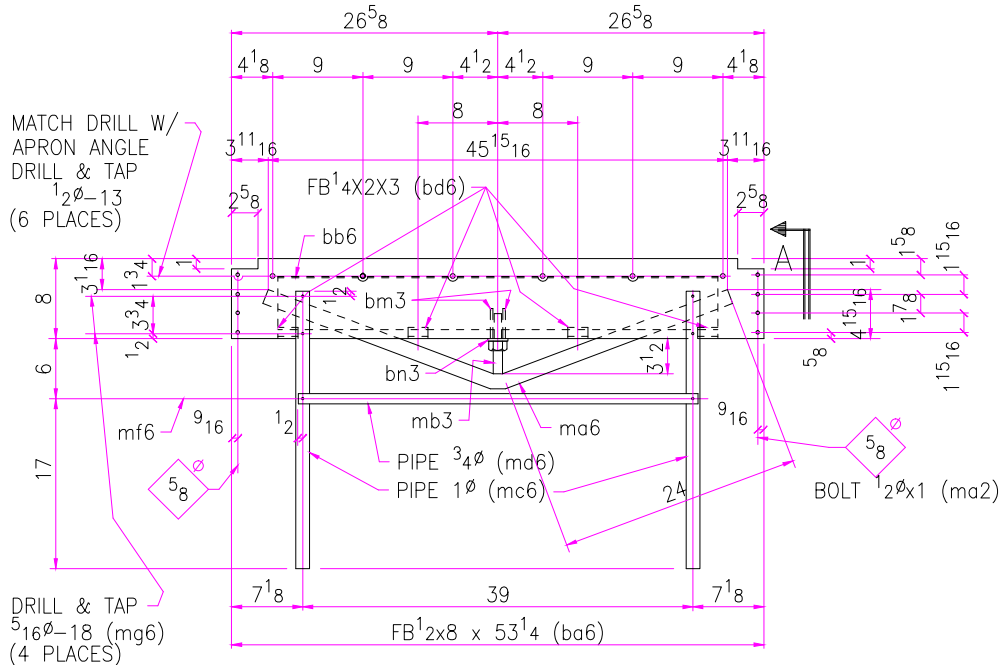
SCALE: 3" = 1'-0"



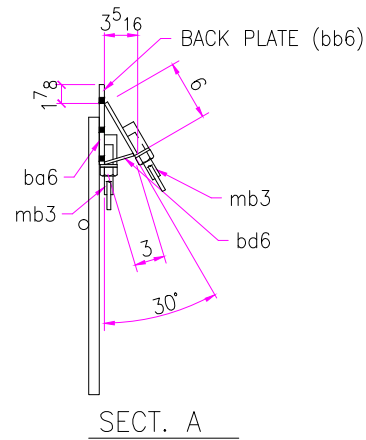
WEIGHT

8

SCALE: 1 1/2" = 1'-0"



APRON ONE



SECT. A

QUANTITY	DESCRIPTION	INCHES	ASSEMBLY MARK
ONE	APRON		
ONE	FB 1/2 x 8	53 1/4	ba6
ONE	FB 3/8 x 6	44	bb6
4	FB 1/4 x 2	3	bd6
ONE	FB 3/8 x 1 1/2	49 1/2	ma6
ONE	FB 3/8 x 1 1/2	46 7/8	mb6
2	STD PIPE 1 inch	27 3/4	mc6
ONE	STD PIPE 3/4 inch	40	md6
2	BOLT 5/16 inch W/1 NUT	2 3/4	mf6
4	BOLT 5/16 inch	2	mg6
8	BOLT 1/2 inch	1	ma2
4	FB 1/4 x 1 1/4	2 1/2	bm3
2	FB 1/4 x 1 1/2	1 1/2	bn3
2	ROD 7/8 inch W/NUT&W	5 1/2	mb3
8	WEIGHTS		
8	R 3x6x6	6	mm6
2	WEIGHT CLAMP		
2	STD PIPE 1 inch	1	mn6
2	BOLT 5/16 inch W/1 NUT	1	md3

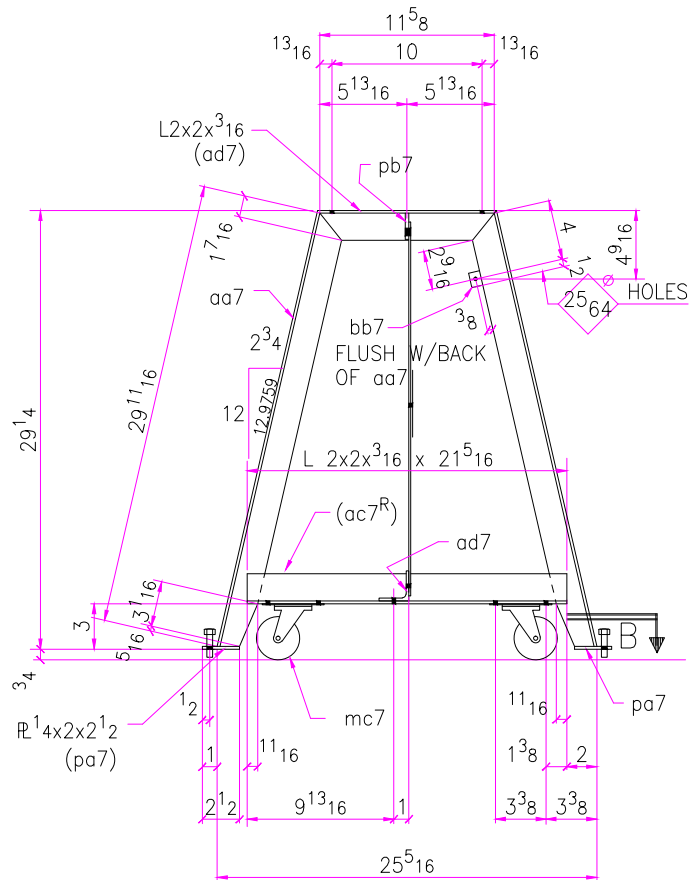
AutoSD, Inc.  
Meridian, Mississippi

DETAIL OF 48" BOX & PAN BRAKE

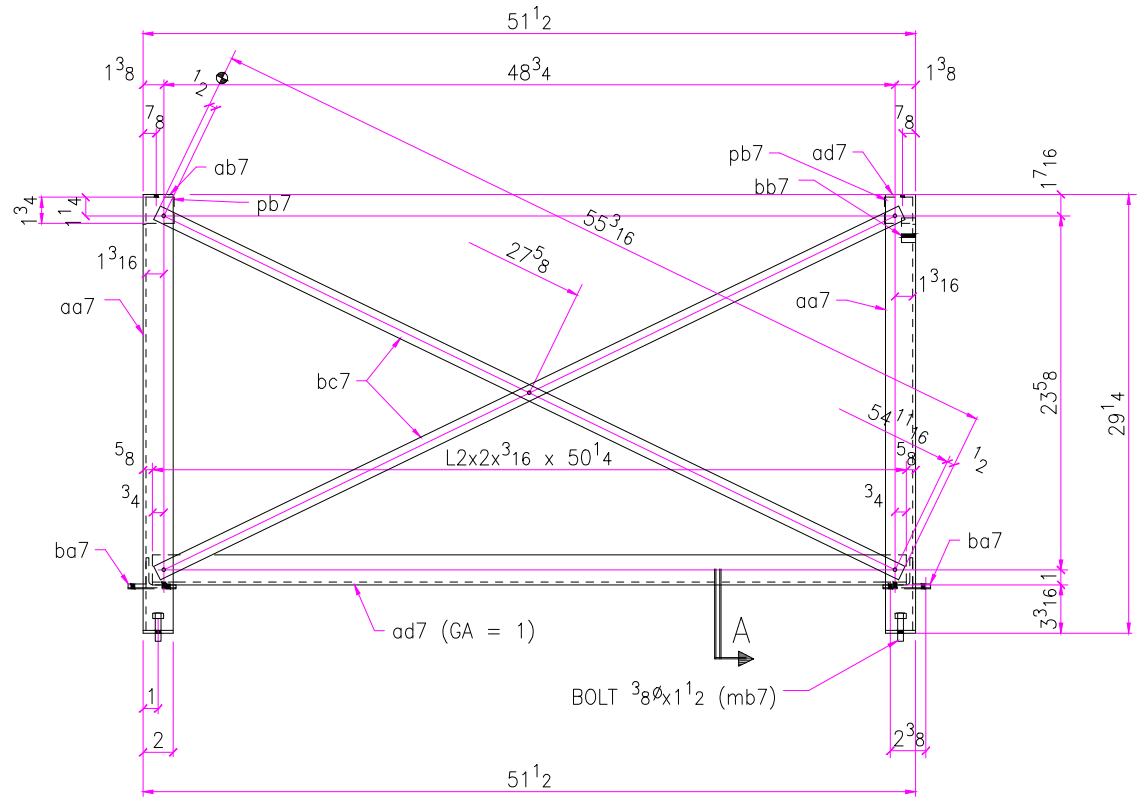
PAINT 1 COAT GREEN

MATERIAL: A36 ALL WELDS 1/8" U.N.O.

HOLES 21 64 inch FOR 5/16 inch BOLTS UNLESS NOTED	DRAWN CRH	CHECKED	SHEET # 6
---	--------------	---------	--------------

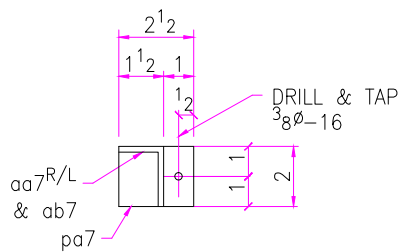


SECT. A



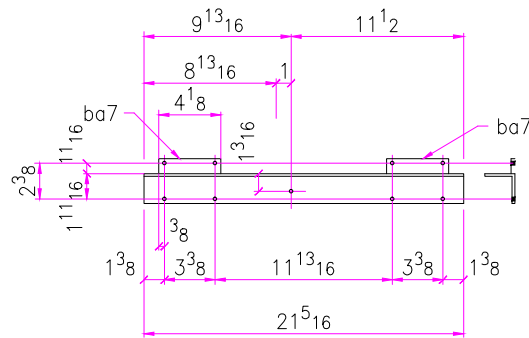
STAND ONE

SCALE: 1 1/2" = 1'-0



SECT. B

SCALE: 3" = 1'-0



DETAIL OF ac7R

AutoSD, Inc.  
Meridian, Mississippi

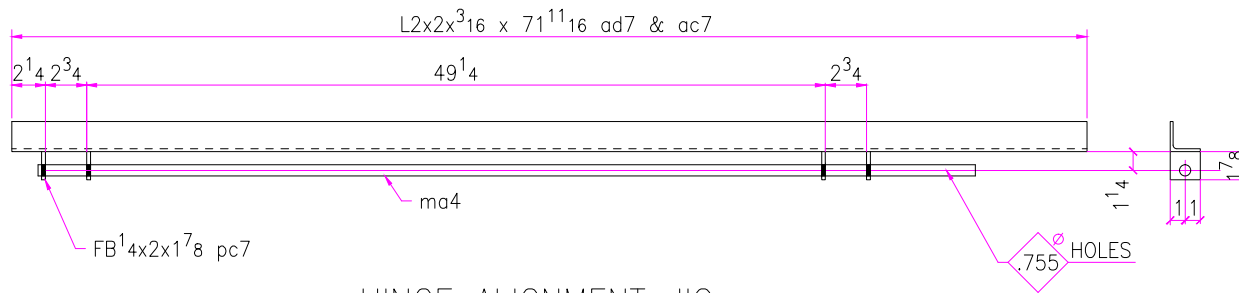
DETAIL OF 48" BOX & PAN BRAKE

PAINT 1 COAT GREEN

MATERIAL: A36 ALL WELDS 1/8" U.N.O.

HOLES 21/64 FOR 5/16 BOLTS UNLESS NOTED	DRAWN CRH	CHECKED	SHEET # 7A
---	--------------	---------	---------------

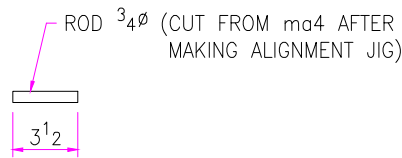




HINGE ALIGNMENT JIG

ONE

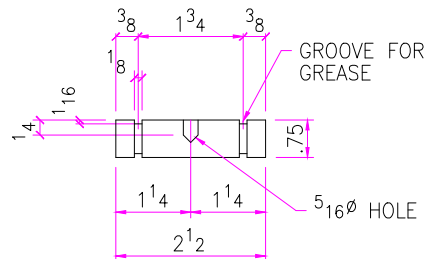
SCALE: 1 1/2" = 1'-0"



HINGE ALIGNMENT PIN

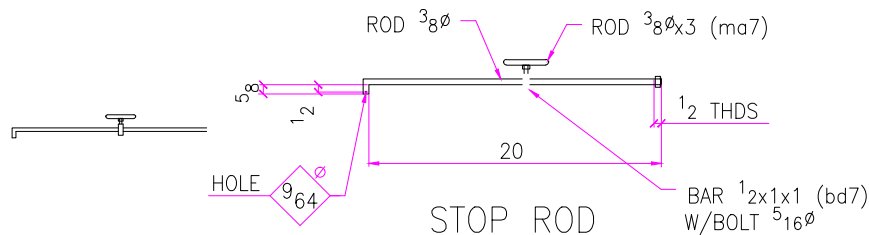
2

SCALE: 1 1/2" = 1'-0"



HINGE PIN

2 CUT FROM HINGE ALIGNMENT PIN



STOP ROD

ONE

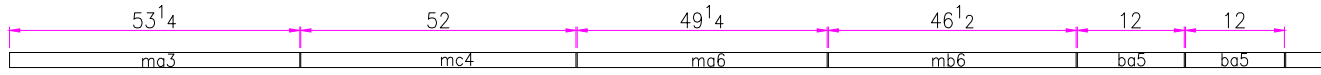
SCALE: 1 1/2" = 1'-0"

QUANTITY	DESCRIPTION	INCHES	ASSEMBLY MARK
ONE	STAND		
2	L2 x 2 x 3/16	71	aa7
1 <sup>R</sup> -1 <sup>L</sup>	L2 x 2 x 3/16	21 5/16	ac7 <sup>R/L</sup>
ONE	L2 x 2 x 3/16	50 1/4	ad7
4	FB 1 1/4 x 1	4 1/8	ba7
ONE	FB 3/4 x 3/4	1	bb7
2	FB 1/8 x 1	54 13/16	bc7
4	FL 1/4 x 2	2 1/2	pa7
2	FL 1/4 x 1 3/4	1 7/8	pb7
4	BOLT 3/8	1 1/2	mb7
4	3" STEEL CASTERS		mc7
23	BOLT 5/16 W/N&W	1	md3
4	FL 1/4 x 2	1 7/8	pc7
ONE	STOP ROD		
ONE	ROD 3/8	21	
ONE	ROD 3/8	3	ma7
ONE	BAR 1/2 x 1	1	bd7
ONE	NUT 3/8		
ONE	BOLT 5/16 W/NUT	1	md3

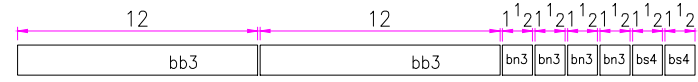
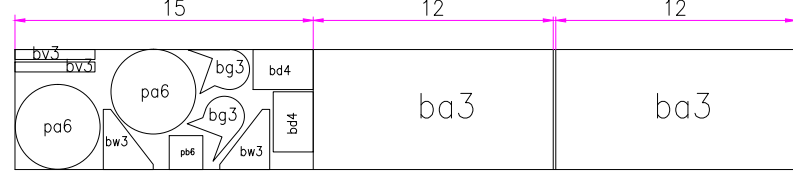
AutoSD, Inc. Meridian, Mississippi			
DETAIL OF 48" BOX & PAN BRAKE			
MATERIAL: A36		ALL WELDS 1/8" U.N.O.	
HOLES 21 5/16 FOR 5/16 BOLTS UNLESS NOTED	DRAWN CRH	CHECKED	SHEET # 7B



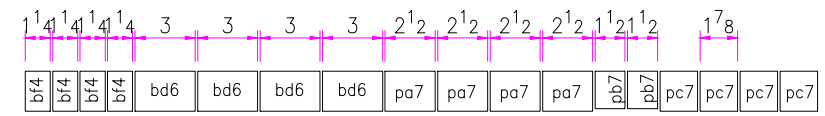




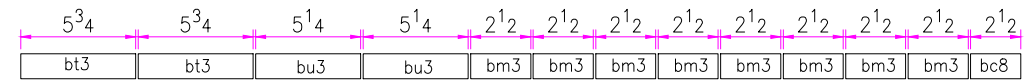
FB<sup>3</sup>8x1<sup>1</sup>2x20'-0



FB<sup>1</sup>4x1<sup>1</sup>2x2'-10

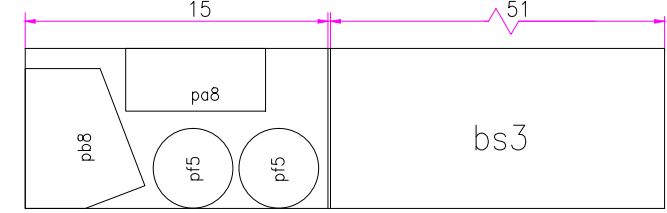


FB<sup>1</sup>4x2x3'-9<sup>5</sup>8

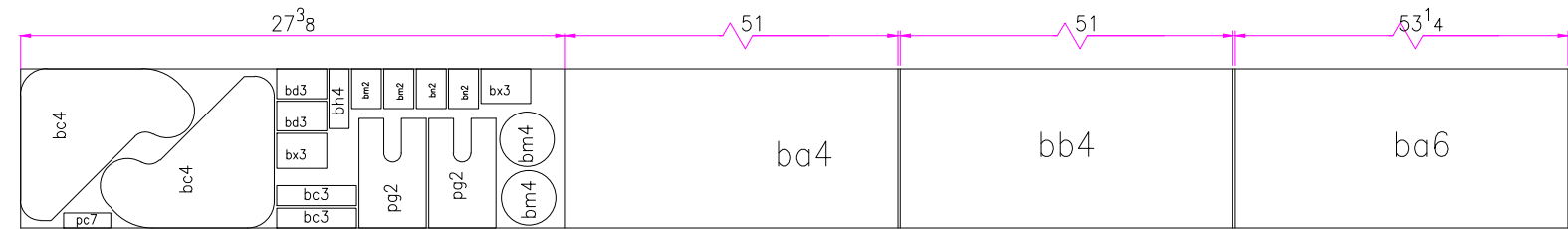


FB<sup>1</sup>4x1<sup>1</sup>4x3'-10

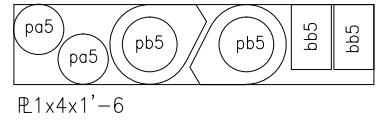
FB<sup>1</sup>4x6x3'-3<sup>1</sup>8



FB<sup>3</sup>8x8x5'-6



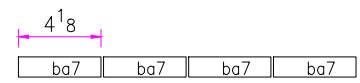
FB<sup>1</sup>2x8x15'-2<sup>3</sup>4



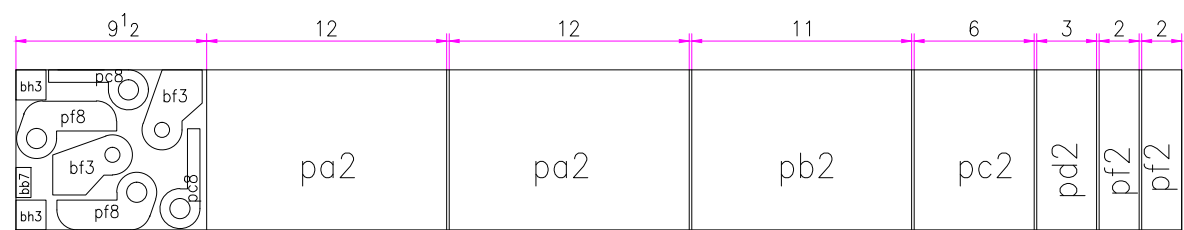
R1x4x1'-6



FB<sup>3</sup>4x6x4'-1

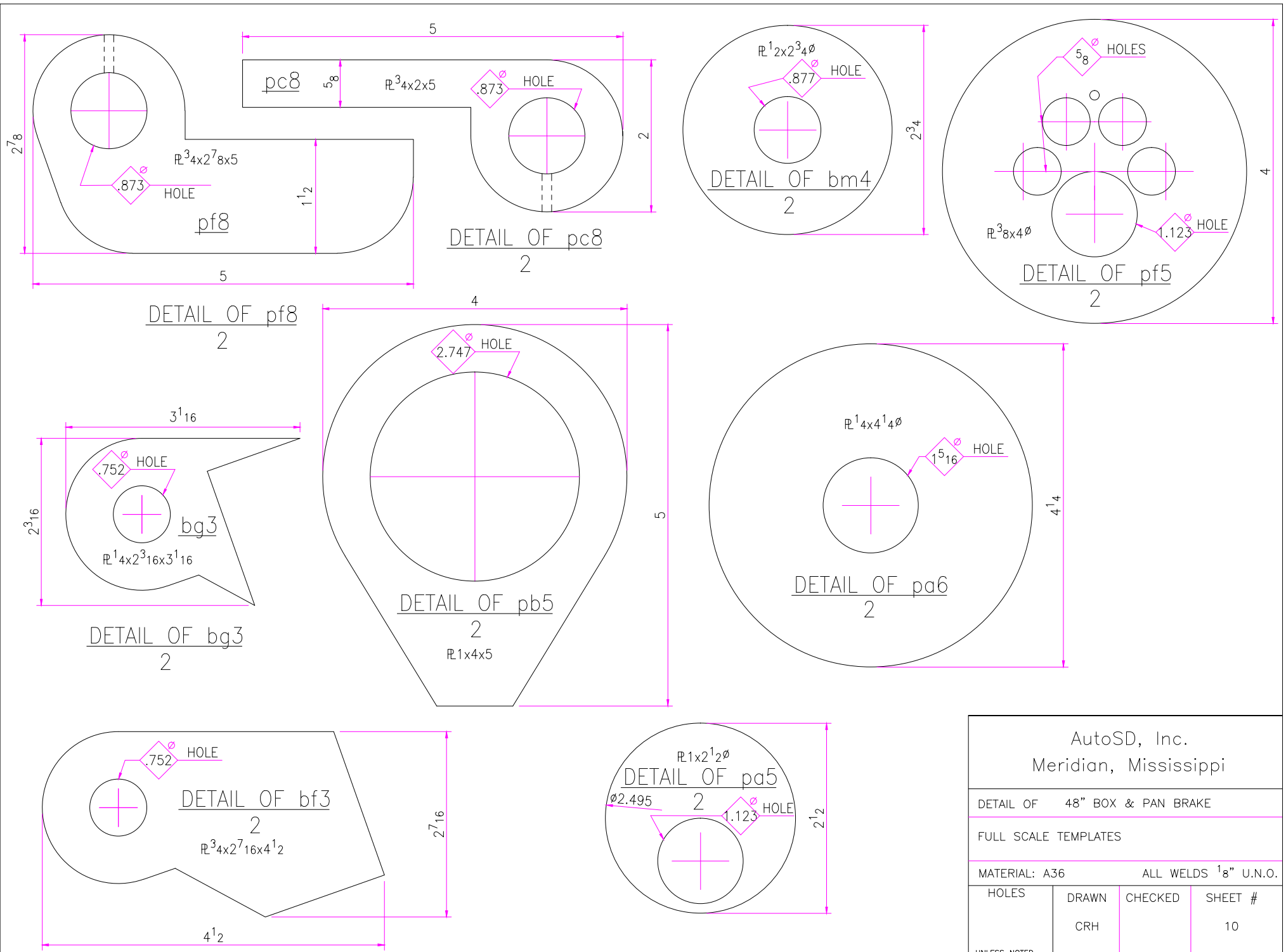


FB<sup>1</sup>4x1x1'-5

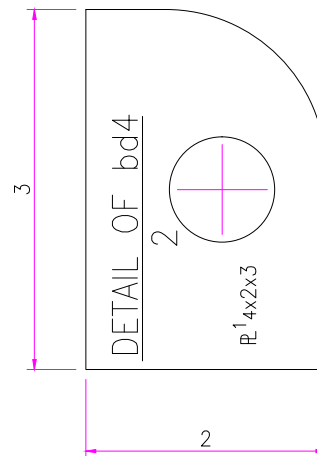
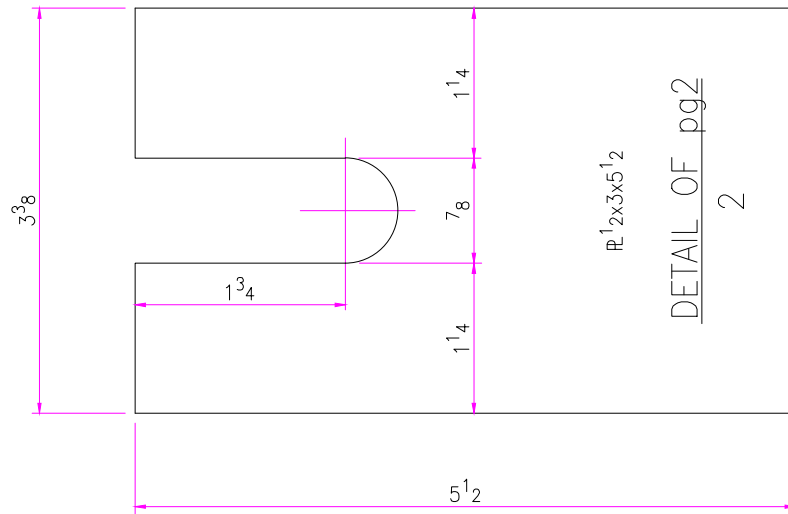
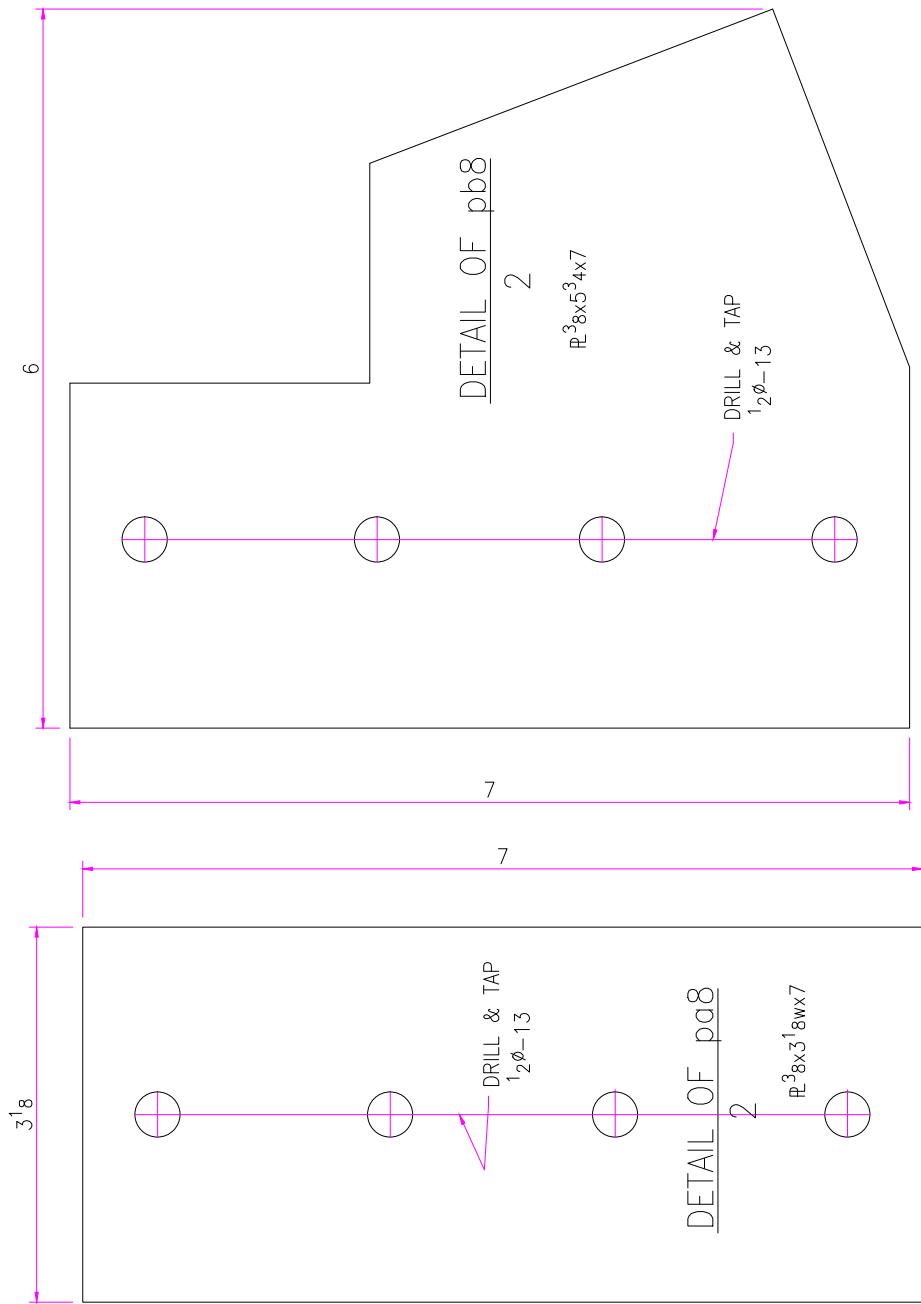


R<sup>3</sup>4x8x4'-10

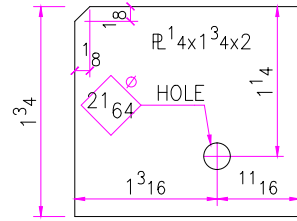
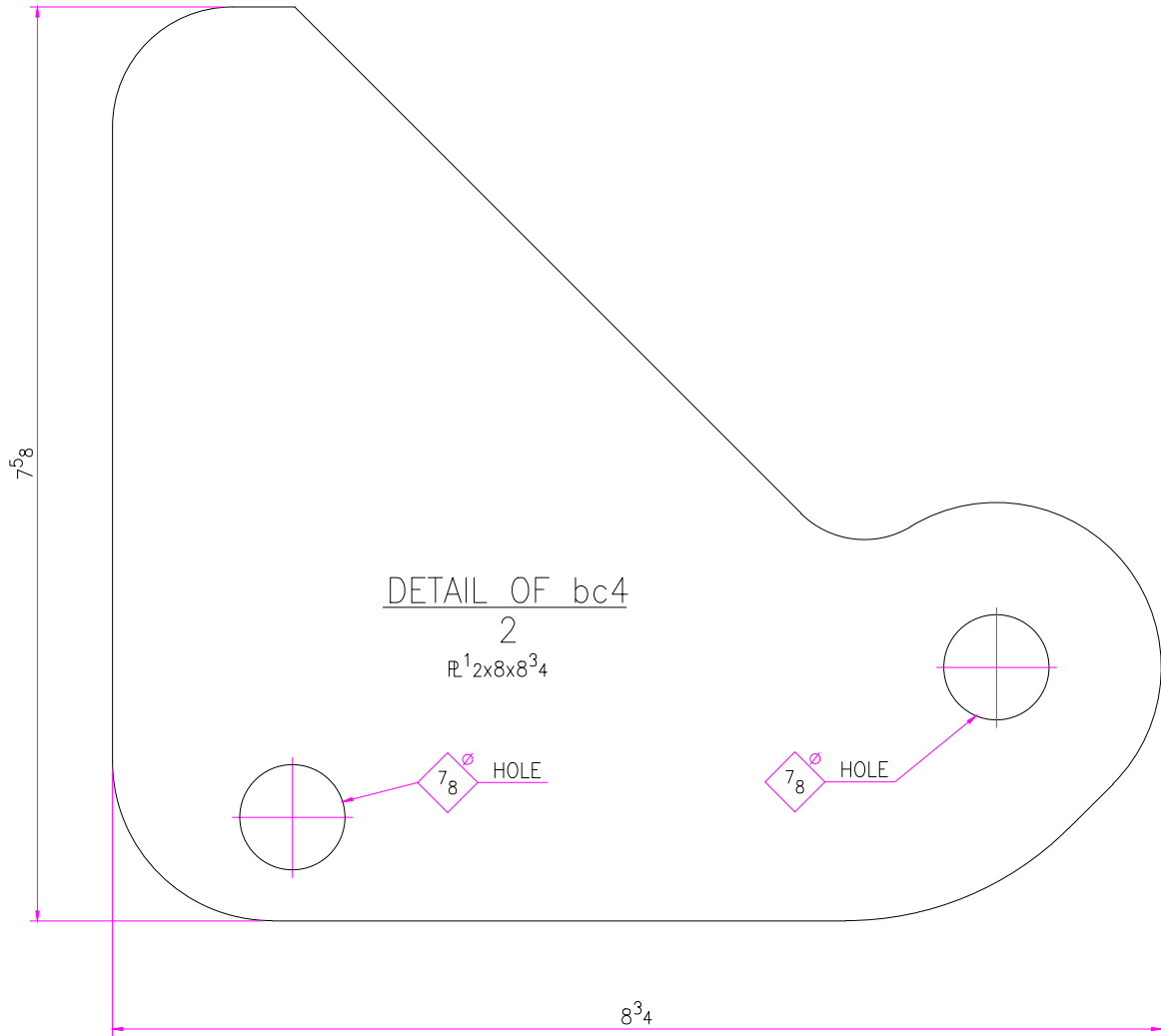
AutoSD, Inc. Meridian, Mississippi			
DETAIL OF 48" BOX & PAN BRAKE			
LOCATION TEMPLATES			
MATERIAL: A36		ALL WELDS 1/8" U.N.O.	
HOLES	DRAWN CRH	CHECKED	SHEET # 9A
UNLESS NOTED			



AutoSD, Inc. Meridian, Mississippi			
DETAIL OF 48" BOX & PAN BRAKE			
FULL SCALE TEMPLATES			
MATERIAL: A36		ALL WELDS 1/8" U.N.O.	
HOLES	DRAWN	CHECKED	SHEET #
	CRH		10
UNLESS NOTED			



AutoSD, Inc. Meridian, Mississippi			
DETAIL OF 48" BOX & PAN BRAKE			
FULL SCALE TEMPLATES			
MATERIAL: A36		ALL WELDS 1/8" U.N.O.	
HOLES	DRAWN CRH	CHECKED	SHEET # 11
UNLESS NOTED			



DETAIL OF pb7  
2

AutoSD, Inc. Meridian, Mississippi			
DETAIL OF 48" BOX & PAN BRAKE			
FULL SCALE TEMPLATES			
MATERIAL: A36		ALL WELDS 1 <sup>8</sup> " U.N.O.	
HOLES	DRAWN CRH	CHECKED	SHEET # 12
UNLESS NOTED			