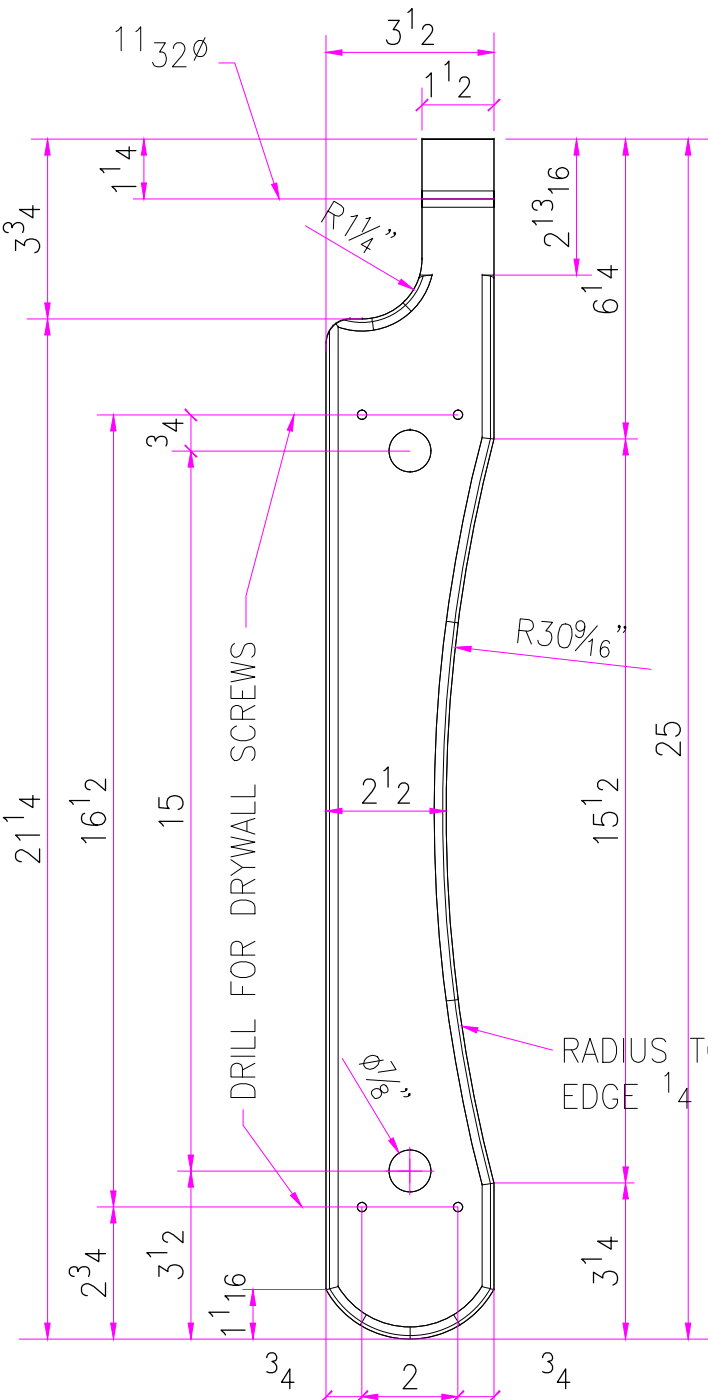


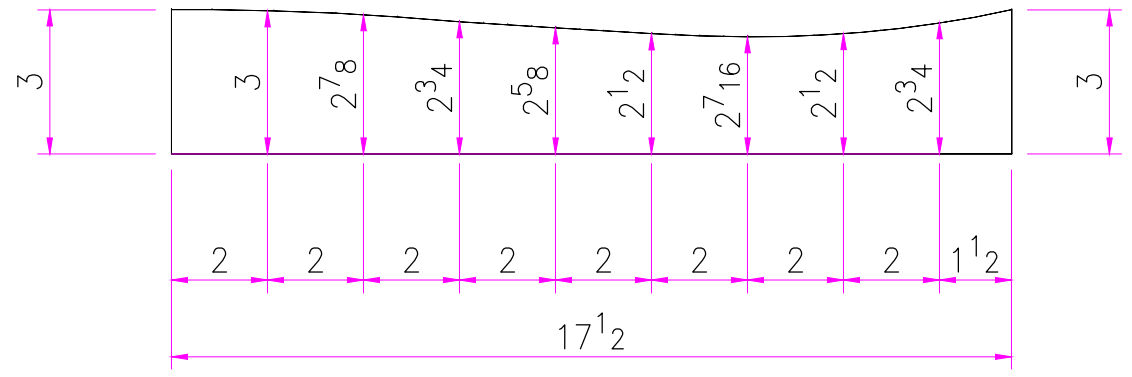
- 1 - BACK TOP -  $3\frac{3}{4} \times 3 \times 48$
- 1 - TOP SLAT -  $3\frac{3}{4} \times 3 \times 48$
- 6 - BACK SLATS -  $3\frac{3}{4} \times 1\frac{3}{4} \times 48$
- 9 - SEAT SLATS -  $3\frac{3}{4} \times 1\frac{3}{4} \times 48$
- 1 - FRONT SUPPORT -  $3\frac{3}{4} \times 3 \times 54$
- 1 - REAR SUPPORT -  $3\frac{3}{4} \times 3 \times 54$
- 4 - SEAT SUPPORT -  $3\frac{3}{4} \times 3 \times 17\frac{1}{2}$
- 2 - SEAT BRACE -  $3\frac{3}{4} \times 2 \times 12\frac{1}{2}$
- 4 - BACK SUPPORT -  $3\frac{3}{4} \times 3\frac{3}{8} \times 17\frac{15}{16}$
- 4 - ARM SUPPORT -  $3\frac{3}{4} \times 3\frac{1}{2} \times 11\frac{1}{2}$
- 2 - ARM REST -  $3\frac{3}{4} \times 3\frac{1}{2} \times 25$
- 4 - CARRIAGE BOLTS  $5\frac{5}{16} \times 2\frac{1}{2}$
- 2 - CARRIAGE BOLTS  $5\frac{5}{16} \times 3$
- 108 - DRYWALL SCREWS  $\times 2$
- 4 - DRYWALL SCREWS  $\times 2\frac{1}{2}$

PORCH SWING	
DRAWN BY:	CRH
SHEET	ONE



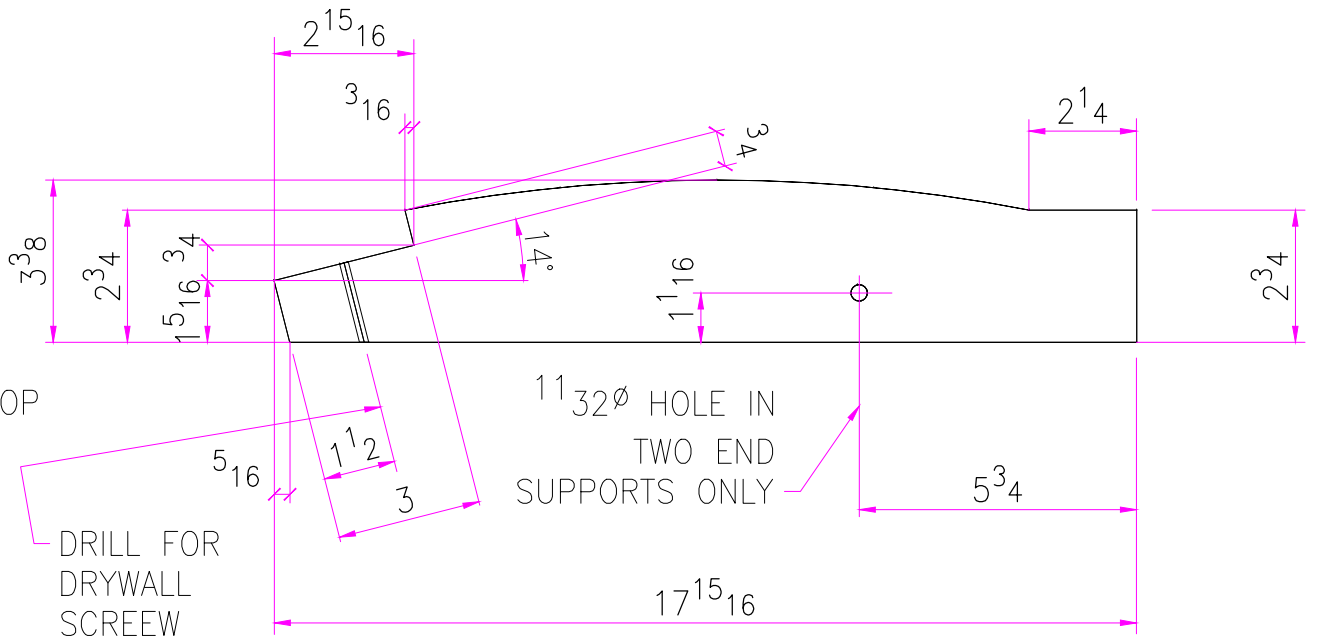
ARM REST

1<sup>R</sup> - 1<sup>L</sup>



SEAT SUPPORT

4

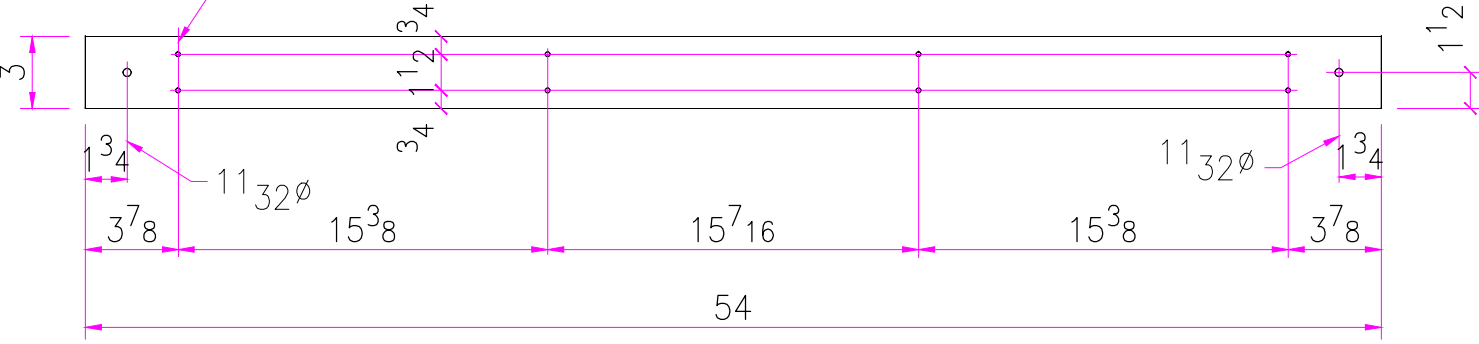


BACK SUPPORT

4

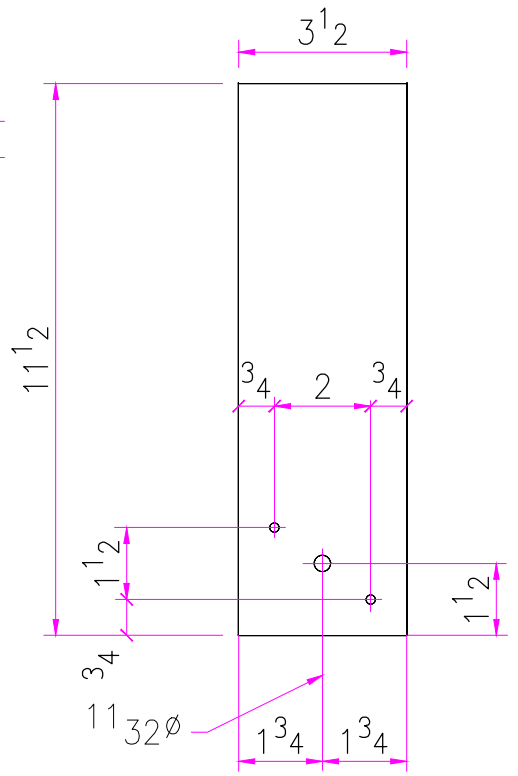
PORCH SWING	
DRAWN BY:	CRH
SHEET	2

DRILL FOR DRYWALL SCREWS (TYP)

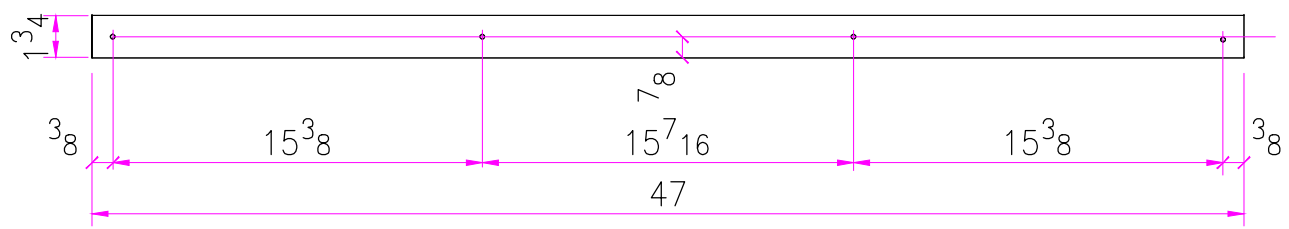


SEAT FRONT SUPPORT  
ONE

SEAT REAR SUPPORT  
ONE

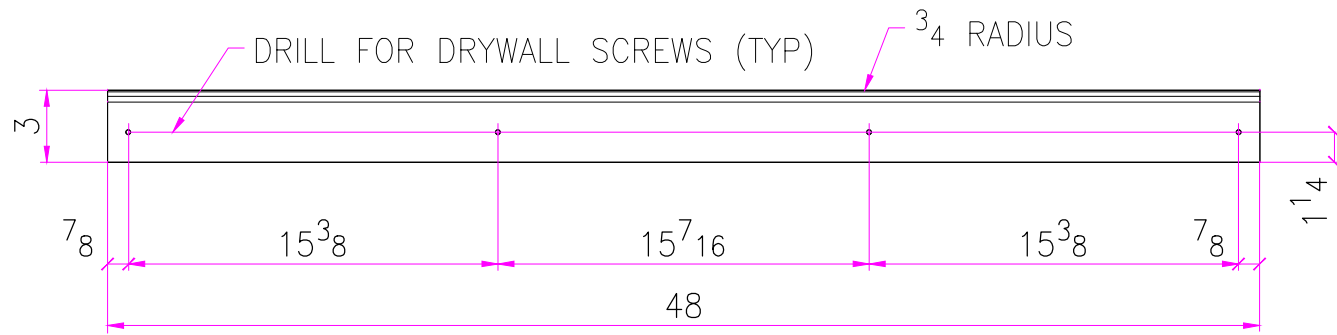


ARM SUPPORT  
4

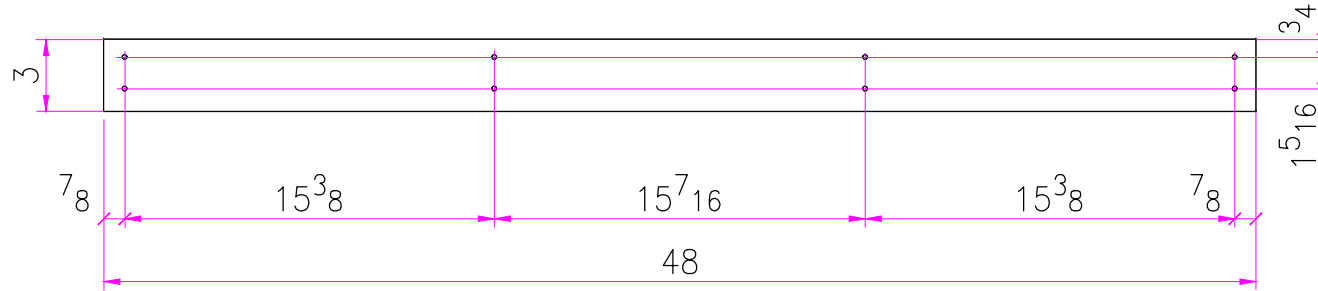


SLAT B  
5

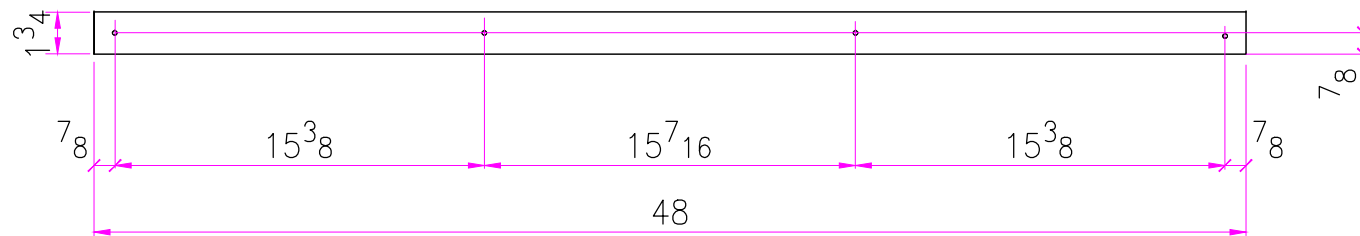
PORCH SWING	
DRAWN BY:	CRH
SHEET	3



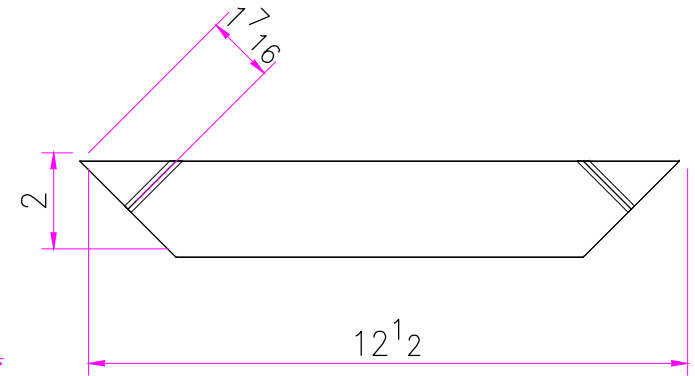
TOP SLAT  
ONE



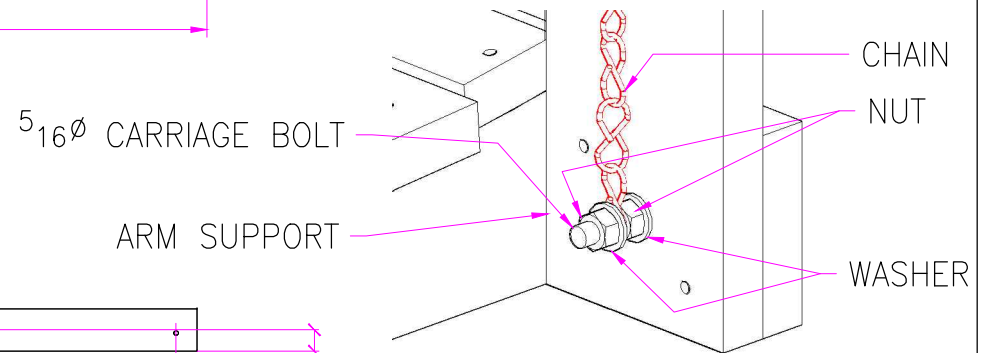
BACK TOP  
ONE



SLAT A  
10



SEAT BRACE  
2



CONNECTION TO CHAIN

PORCH SWING	
DRAWN BY:	CRH
SHEET	4