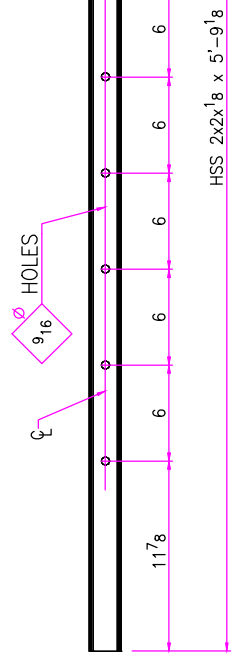
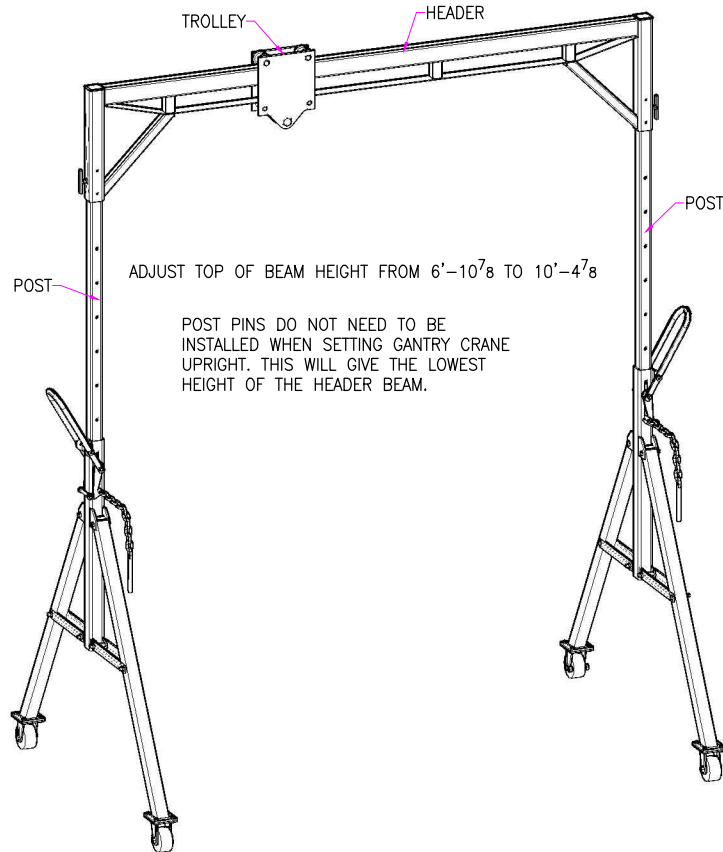


**HEADER  
ONE**



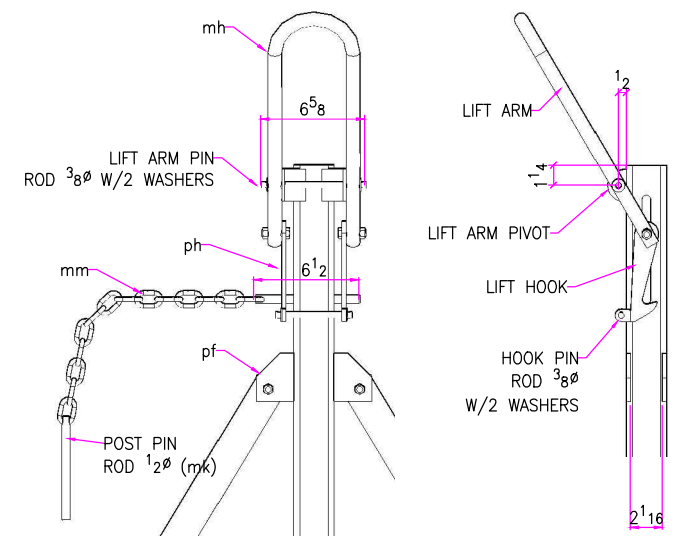
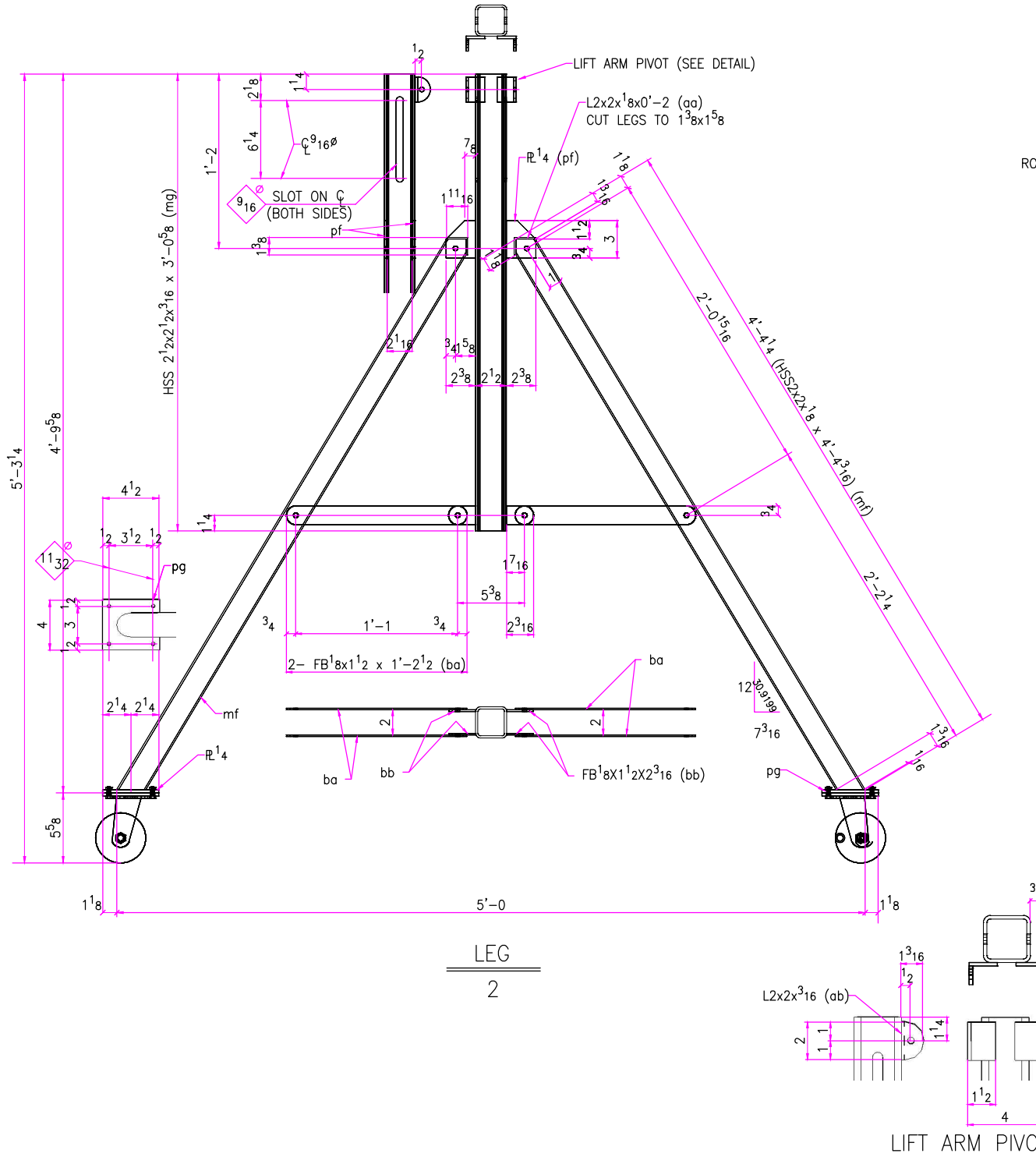
**POST  
2**

QUANTITY	SHIPPING MARK	DESCRIPTION	FEET	INCHES	ASSEMBLY MARK	REMARKS	TOTAL WEIGHT
ONE		HEADER					
2		HSS 2 <sup>1</sup> / <sub>2</sub> x2 <sup>1</sup> / <sub>2</sub> x <sup>3</sup> / <sub>16</sub>	1	7 <sup>1</sup> / <sub>2</sub>		ma	18.2
2		HSS 1 <sup>1</sup> / <sub>2</sub> x1 <sup>1</sup> / <sub>2</sub> x <sup>1</sup> / <sub>8</sub>	1	6 <sup>1</sup> / <sub>2</sub>		mb	6.8
4		HSS 1 <sup>1</sup> / <sub>2</sub> x1 <sup>1</sup> / <sub>2</sub> x <sup>1</sup> / <sub>8</sub>	0	2 <sup>1</sup> / <sub>8</sub>		mc	2.1
ONE		HSS 3x2x <sup>1</sup> / <sub>8</sub>	8	0		md	31.2
2		R <sup>1</sup> / <sub>8</sub> x2 <sup>1</sup> / <sub>2</sub>	0	2 <sup>1</sup> / <sub>2</sub>		pa	0.4
ONE		FB <sup>1</sup> / <sub>8</sub> x 2	8	7		pb	7.3
2		FB <sup>1</sup> / <sub>8</sub> x <sup>3</sup> / <sub>4</sub>	0	1 <sup>1</sup> / <sub>2</sub>		pc	0.1
4		BOLT <sup>3</sup> / <sub>8</sub> W/NUT	0	3 <sup>1</sup> / <sub>4</sub>			
2		BOLT <sup>3</sup> / <sub>8</sub> W/NUT	0	1			
2		FB <sup>1</sup> / <sub>4</sub> x <sup>1</sup> / <sub>2</sub>	0	4		bd	0.3
2		POST HSS 2x2x <sup>1</sup> / <sub>8</sub>	5	9 <sup>1</sup> / <sub>8</sub>			34.4
TOTAL WEIGHT:							100.8

**ASD** AutoSD Steel Detailing  
 Meridian, Mississippi

PROJECT 1<sup>1</sup>/<sub>2</sub> TON GANTRY CRANE  
 LOCATION MERIDIAN, MS  
 DETAIL OF HEADER & POST USING 2" SQUARE TUBE

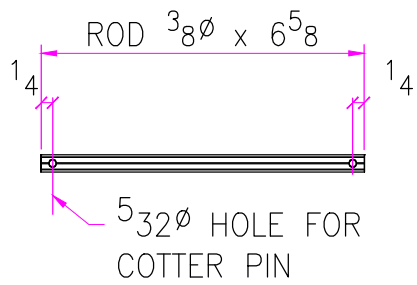
REVISIONS  
 HOLES 13 3/20 UNLESS NOTED  
 DRAWN CRH  
 CHECKED  
 SHEET # ONE  
 JOB #



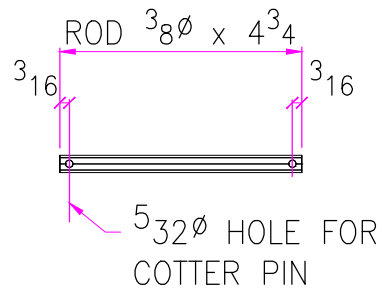
QUANTITY	SHIPPING MARK	DESCRIPTION	FEET	INCHES	ASSEMBLY MARK	REMARKS	TOTAL WEIGHT
4		LEGS & BRACE					
4		HSS 2x2x1/8	4	4 3/16	mf		53.1
2		HSS 2 1/2x2 1/2x3/16	3	0 5/8	mq		34.1
4		L2x2x1/8	0	2	aa		1.1
8		R 1/4x2 3/8	0	3	pf		4.0
8		FB 1/8x1 1/2	1	2 1/2	ba		6.2
8		FB 1/8x1 1/2	0	2 1/16	bb		0.9
4		R 1/4x4	0	4 1/2	pg		5.1
4		L 2x2x3/16	0	2	ab		1.6
4		BOLT 3/8\"/>					

**ASD** AutoSD Steel Detailing  
Meridian, Mississippi

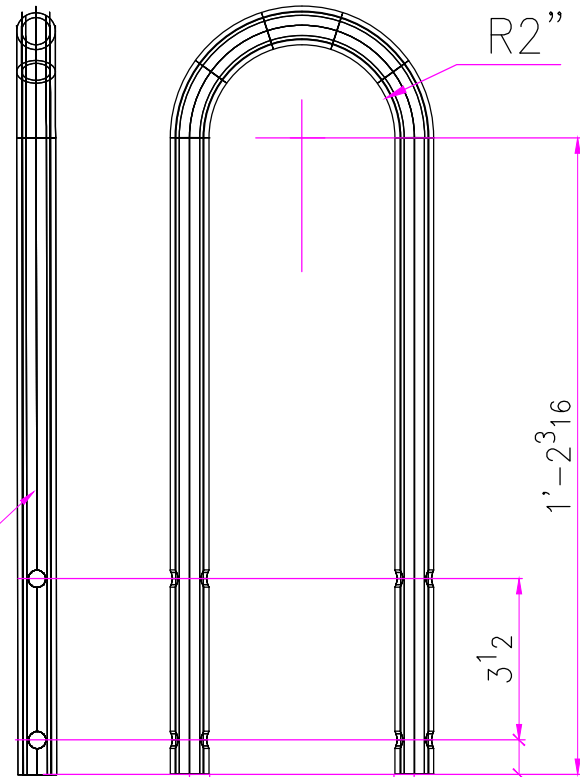
PROJECT	1 1/2 TON GANTRY CRANE
LOCATION	MERIDIAN, MS
DETAIL OF	LEGS & LIFT USING 2\"/>
REVISIONS	
HOLES	PAINT
1332	UNLESS NOTED
DRAWN	CHECKED
CRH	
SHEET #	JOB #
2	



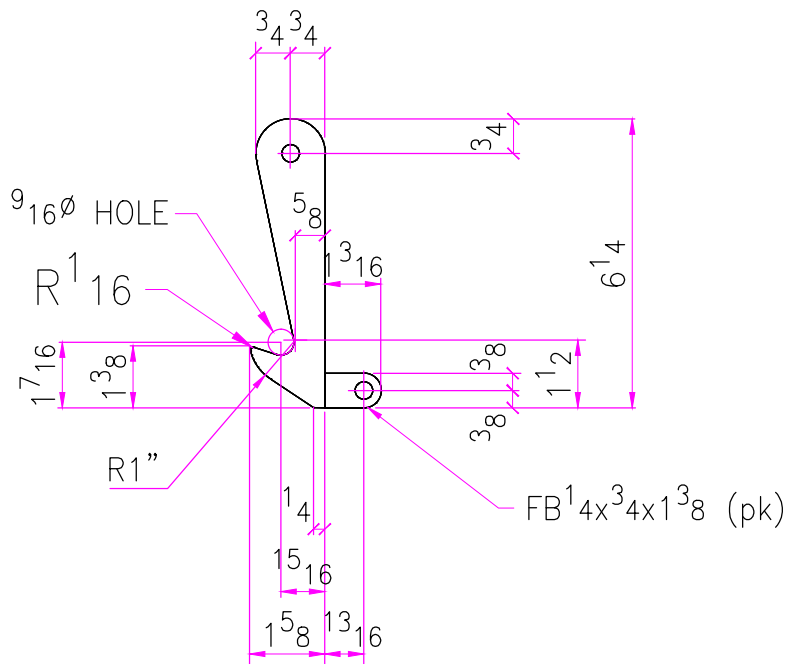
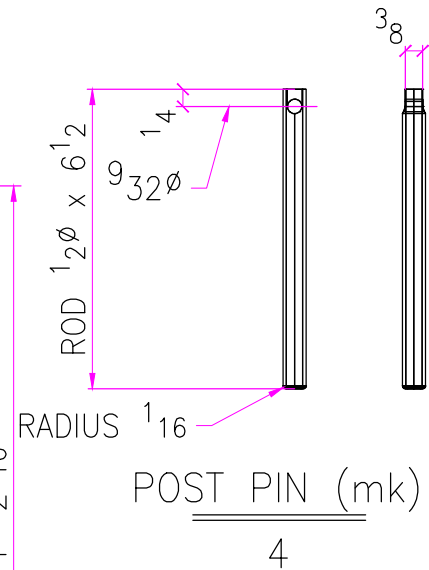
LIFT ARM PIN  
2



HOOK PIN  
2

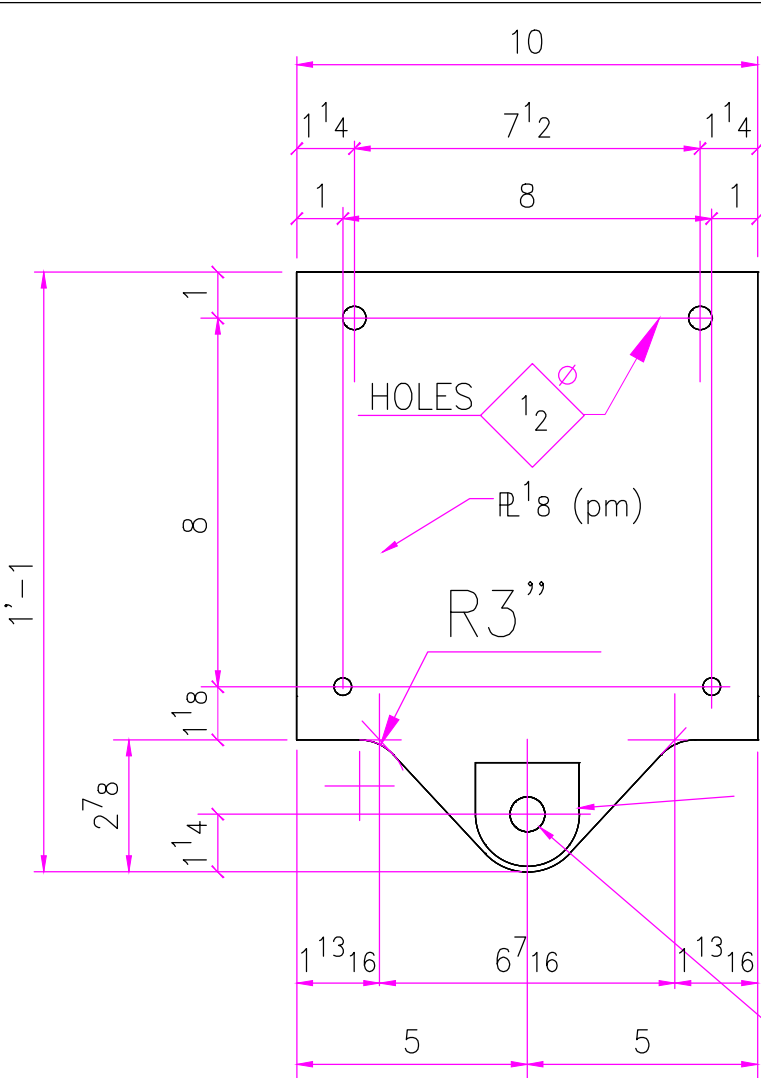


LIFT ARM (mh)  
2

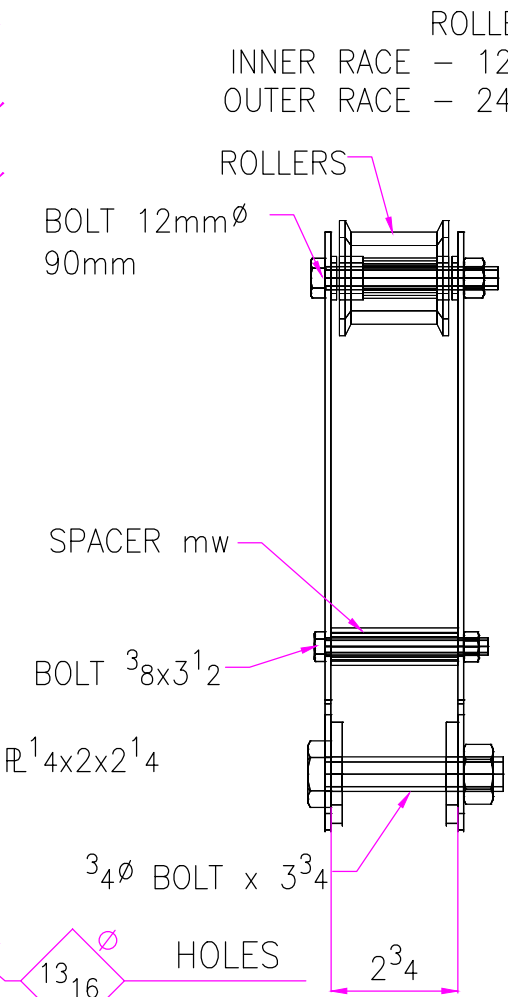


LIFT HOOK  
4

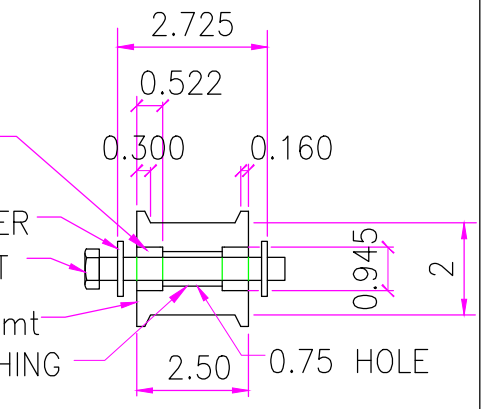
ASD		AutoSD Steel Detailing Meridian, Mississippi			
PROJECT	1 $\frac{1}{2}$ TON GANTRY CRANE				
LOCATION	MERIDIAN, MS				
DETAIL OF	LIFT DETAILS USING 2 $\frac{1}{2}$ SQUARE TUBE				
REVISIONS					
HOLE 1 $\frac{3}{32}\phi$ UNLESS NOTED	PAINT	DRAWN CRH	CHECKED	SHEET # 3	JOB #



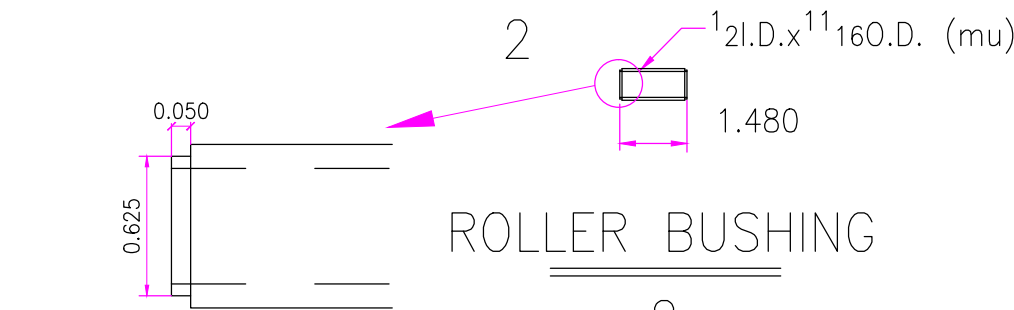
TROLLEY PLATE



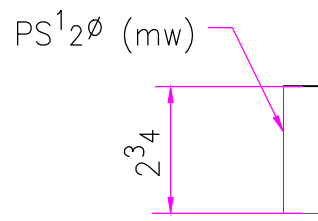
ROLLER BEARING  
 INNER RACE - 12mmX14mm  
 OUTER RACE - 24mmX13mm



ROLLER



ROLLER BUSHING



R SPACER

QUANTITY	SHIPPING MARK	DESCRIPTION	FEET	INCHES	ASSEMBLY MARK	REMARKS	TOTAL WEIGHT
2		ROLLER					
2		ROD 2 1/2"	0	2 1/2	mt		7.0
2		ROD 3/4"	0	1 1/2	mu		0.7
2		BOLT 12mm W/NUT	0	90mm			
4		ROLLER BEARING 12mmx24mm		13mm			
ONE		TROLLEY					
2		R 1/2x10	1	1	pm		9.2
2		R 1/2x2 1/4	0	2 1/4	pn		0.7
2		PS 1/2"	0	2 1/4	mw		0.4
ONE		A325 BOLT 3/8" W/NUT	0	3 1/2			
2		BOLT 3/8" W/NUT	0	3 1/2			
TOTAL WEIGHT:							48.8

ASD		AutoSD Steel Detailing Meridian, Mississippi			
PROJECT	1 1/2 TON TROLLEY				
LOCATION	MERIDIAN, MS				
DETAIL OF	TROLLEY & WHEELS				
REVISIONS					
HOLES	PAIN	DRAWN	CHECKED	SHEET #	JOB #
13 3/2"		CRH		4	
UNLESS NOTED					